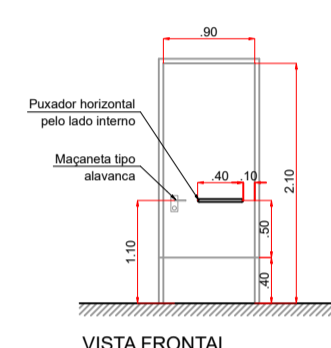
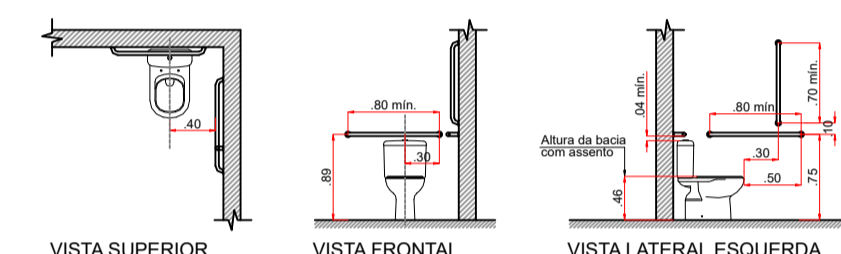
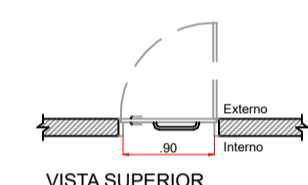


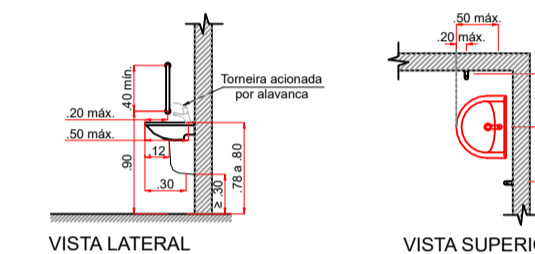
CORTE ESQUEMÁTICO A - A  
Escala 1:50



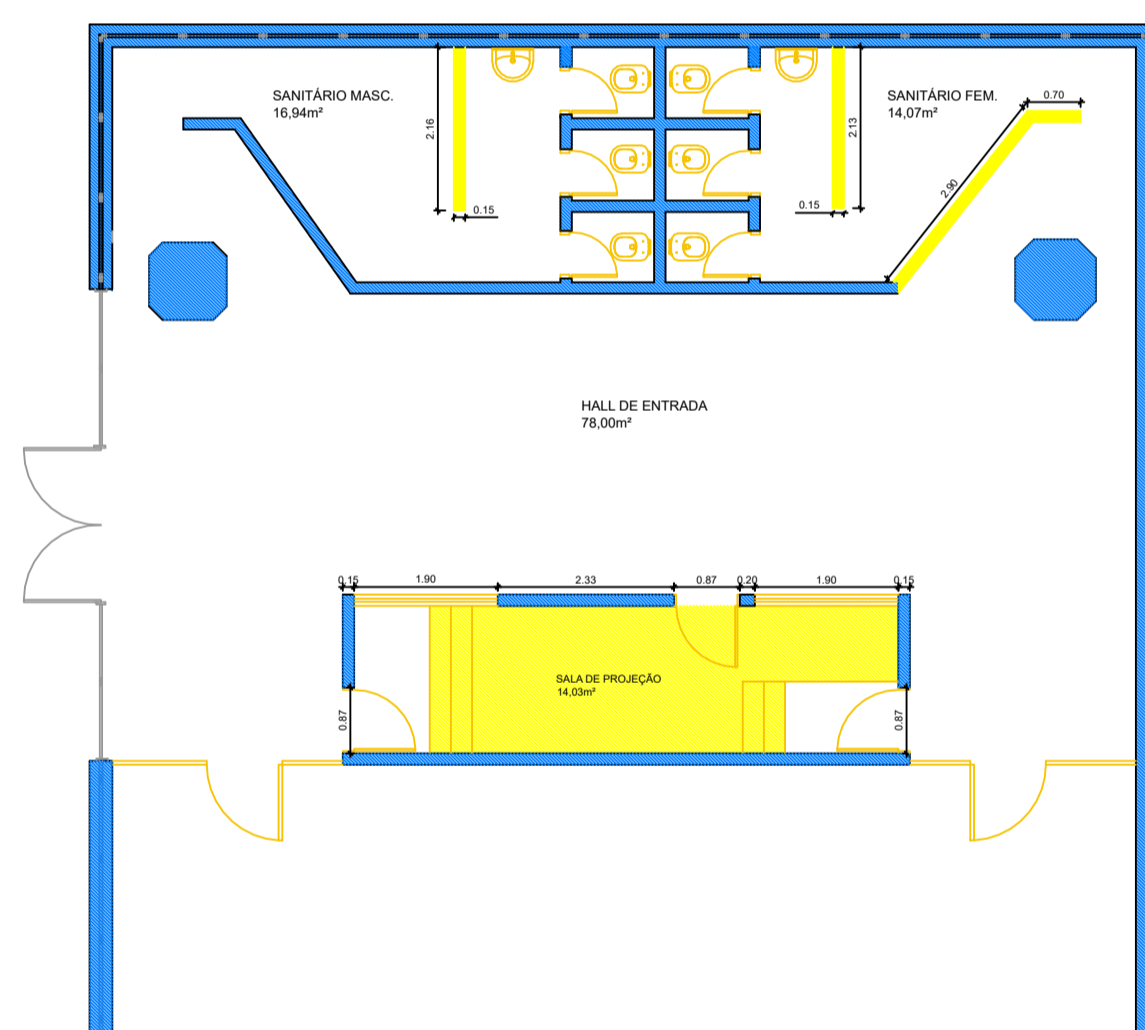
DETALHE 01 - PORTA SANIT. PNE  
Sem escala



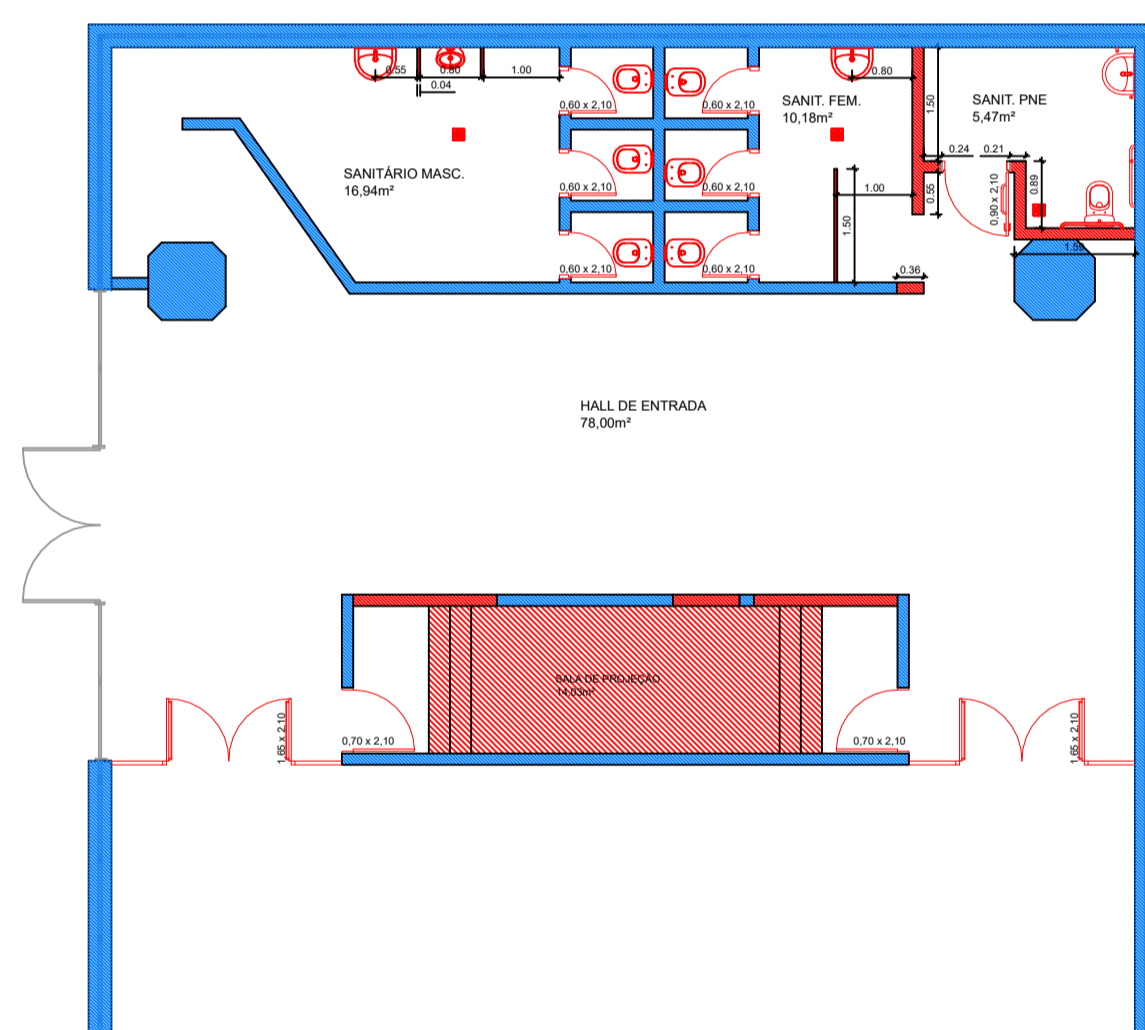
DETALHE 02 - VASO PNE  
Sem escala



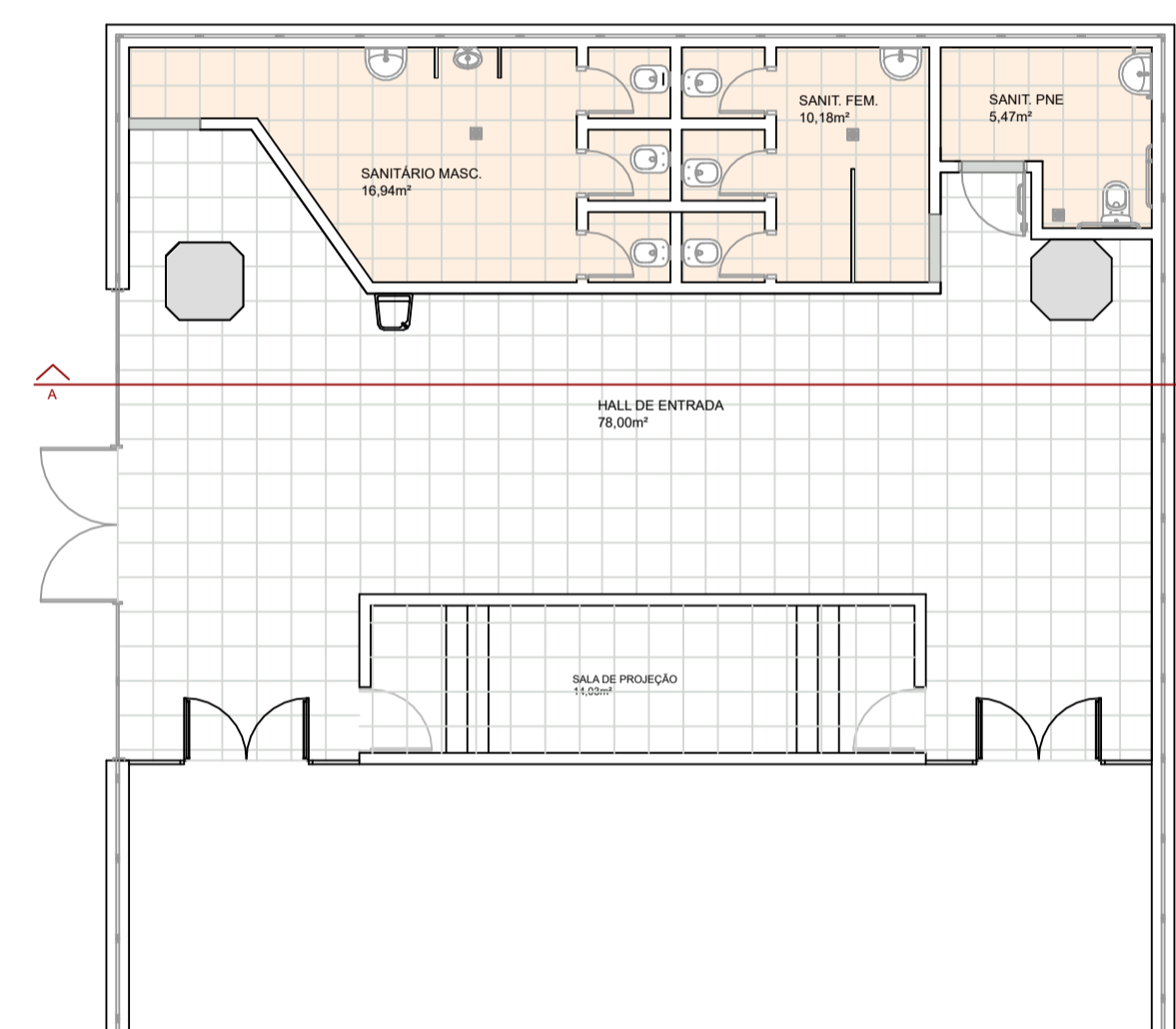
DETALHE 03 - LAVATÓRIO PNE  
Sem escala



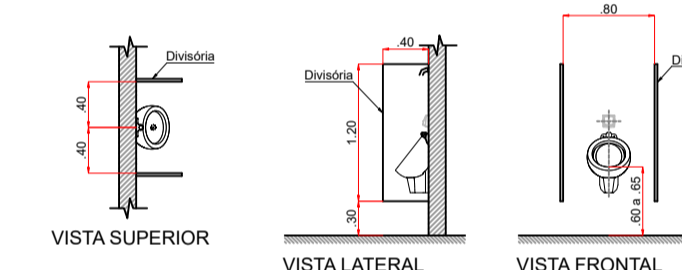
PLANTA BAIXA - DEMOLIR  
Escala 1:100



PLANTA BAIXA - CONSTRUIR  
Escala 1:100



PLANTA BAIXA - ARQUITETÔNICO  
Escala 1:100



DETALHE 04 - MICTÓRIO  
Sem escala



**PREFEITURA DO MUNICÍPIO DE JAHU**  
SECRETARIA DE HABITAÇÃO E PLANEJAMENTO URBANÍSTICO

Obra: REFORMA E ADEQUAÇÃO DOS SANITÁRIOS E HALL DE ENTRADA DO CINE MUNICIPAL "CLODOMIRO CELULARE", EM JAHU/SP

Local: RUA PAISSANDU, Nº 444 - CENTRO - JAHU/SP

ANA PAULA MÓDOLO SANTOS  
ENGENHEIRA CIVIL

Arquivo	Rev.	Escala	Estudo	Fl.
SANITÁRIOS CINEMA.dwg	0	INDICADAS	abril/2024 impressão abril/2024	01/01